

# Appendix 5 - 2022/23 Q4

## CHILDREN’S SERVICES, EDUCATION AND LIFELONG SKILLS

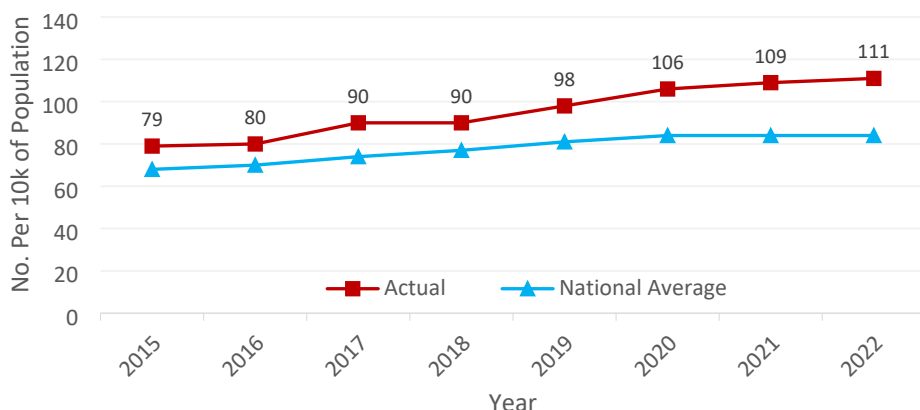
**Cabinet Member:** Councillor Debbie Andre

**Portfolio Responsibilities:**

- Adoption
- Fostering
- Disabled Children Support
- Respite Care
- Early Help
- Care Leavers
- Safeguarding
- Short Breaks
- Youth Service
- Special Educational Needs
- Alternative Education
- Early Years Development
- School Improvement
- Schools
- Asset Management
- Home to School Transport

### Performance Measures

#### Rate of children looked after at year end (per 100k of the population)



**Aim:** The rate of children looked after decreases

**UN Sustainable Development Goal:** 3

**Most Recent Status:** March 2023

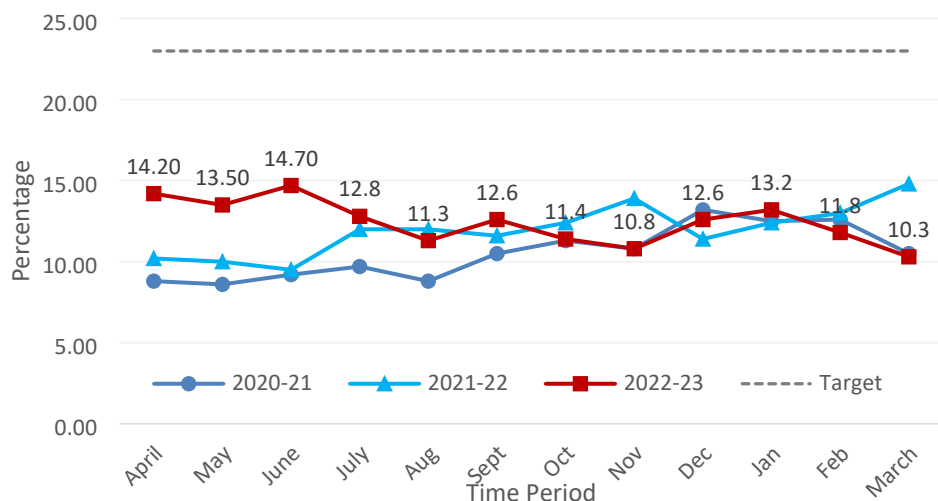
**Monitoring Measure Only**

**Previous Status:** March 2022

**Monitoring Measure Only**

- This data is provided annually by the Department for Education.
- Over the last 7 years the Isle of Wight has seen a steady increase year on year, and we are consistently above the national average.

### Percentage of children becoming the subject of Child Protection Plan for a second or subsequent time (within two years of the previous plans end date).



**Aim:** The percentage of children becoming subject of a second or subsequent plan remains below 23 percent

**UN Sustainable Development Goal:** 3

**Most Recent Status:** March 2023

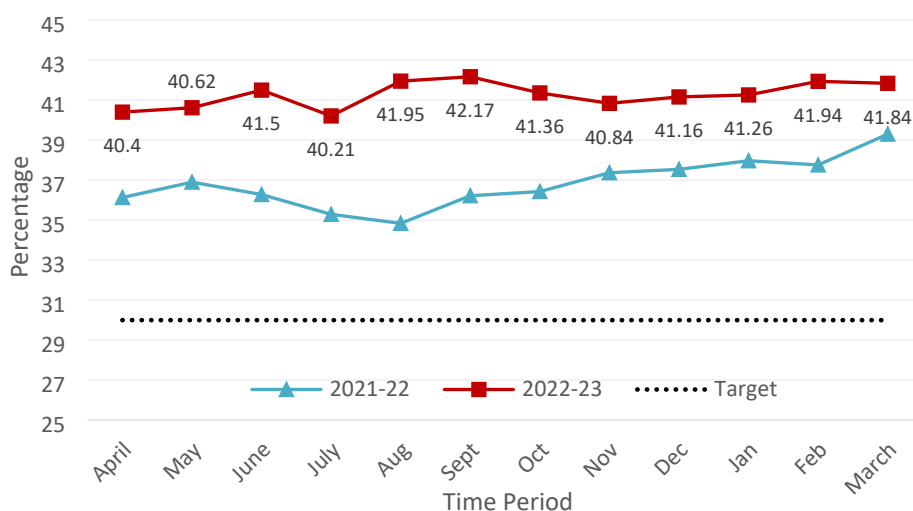
**GREEN**

**Previous Status:** December 2022

**GREEN**

- The management team reviews each case of a child who is subject to a second or subsequent child protection plan within two years to ensure that the response from the social care teams and Independent Reviewing Service is proportionate, and to provide assurance that there were no missed opportunities for earlier intervention or support.
- The reason for the second or subsequent child protection plan is analysed; the majority being because of associated issues with the first child protection plan such as domestic abuse, adult substance misuse and/or adult mental health.
- We have seen a drop in the percentage during quarter 4 (data up to February), and remain well below the target of 23 percent, as we have for the last 2.5 years.

### Percentage of children with a referral within 12 months of a previous referral



**Aim:** The percentage of children with a referral within 12 months is below 30 percent target

**UN Sustainable Development Goal:** 3

**Most Recent Status:** March 2023

**Monitoring Measure Only**

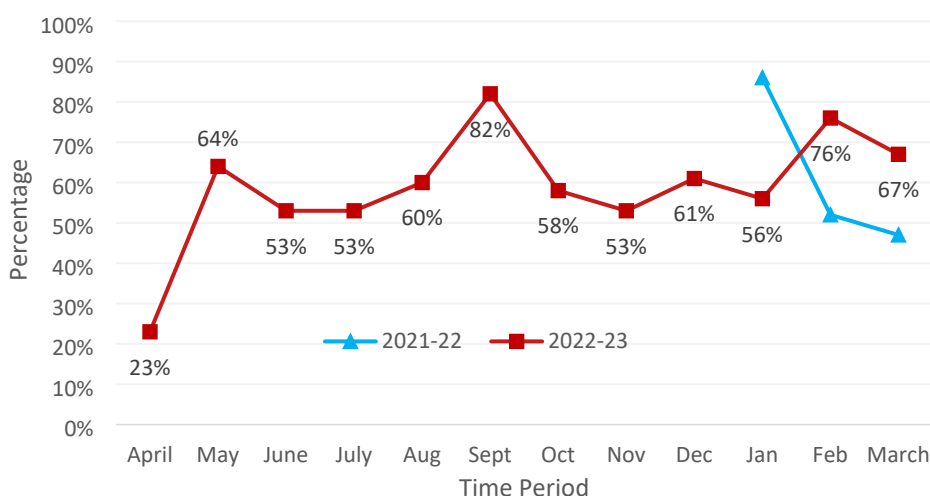
**Previous Status:** March 2022

**Monitoring Measure Only**

- Unlike other local authorities, the Multi-Agency Safeguarding Hub (MASH) counts all re-referrals to ensure a more accurate view rather than only counting those re-referrals that originally progressed to an authorised completed assessment.
- Additional corporate investment was made to increase the number of frontline social workers to prepare and respond to this rise in demand, although recruitment of qualified social workers remains challenging both regionally and nationally.
- A re-referral audit took place in October and November 2022 and found that in 76 percent of the 54 cases audited no action could have been taken to prevent the child being re-referred. Of

those that were re-referred for the same reason some were closed without any action or plan. Managers have been asked to address this. It is reassuring that the re-referral rate during the audit was like Hampshire’s who measure re-referrals in the same way and share a MASH with the Isle of Wight.

**Percentage of early help cases closed with outcomes achieved**



**Aim:** Increase in the percentage of cases closed with outcomes achieved

**UN Sustainable Development Goal: 3**

**Most Recent Status:** March 2023

**Monitoring Measure Only**

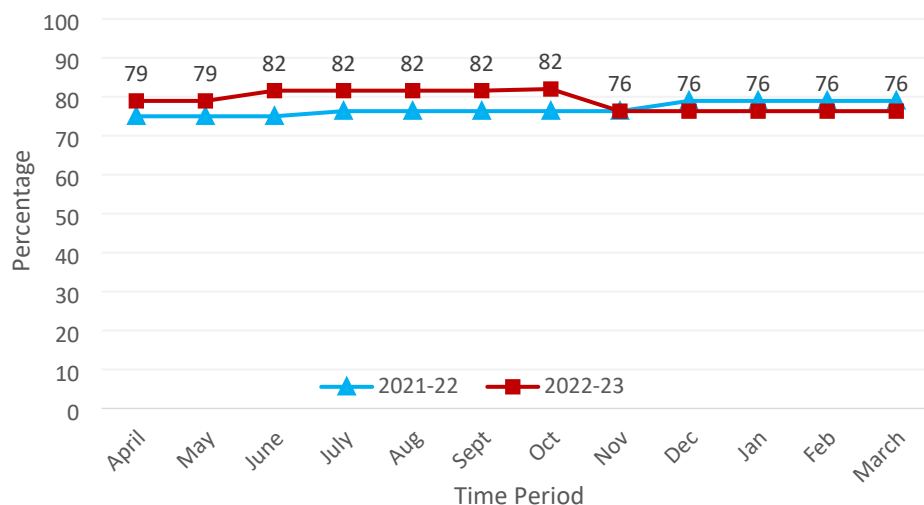
**Previous Status:** December 2022

**Monitoring Measure Only**

- There are assorted reasons for closure of Early Help cases, of which outcomes is one. The number of closed cases and of those with outcomes achieved is shown in the below table.
- Many of the cases reported during this period were closed under the category of ‘other,’ which makes it hard to distinguish whether outcomes have been achieved.

	April	May	June	July	Aug	Sep	Oct	Nov	Dec	Jan	Feb	Mar
<b>Cases Closed</b>	13	50	42	34	10	51	40	43	18	43	25	60
<b>Cases Closed with outcomes achieved</b>	3	32	22	18	6	42	23	23	11	24	19	40

**Percentage of primary schools graded as good or outstanding in the most recent inspection (not including schools with no inspection score)**



**Aim:** Increase in the percentage of schools graded good or outstanding in the most recent inspection

**UN Sustainable Development Goal: 4**

**Most Recent Status:** March 2023

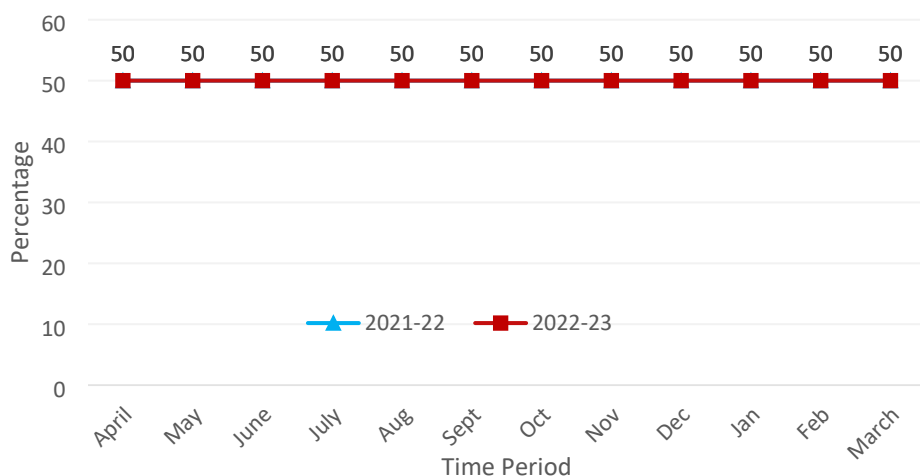
**Monitoring Measure Only**

**Previous Status:** December 2022

**Monitoring Measure Only**

- The overall percentage of primary schools rated good or better stands at 76 percent at the end of Q4. This is slightly below the 79 percent from the same period last year.
- Out of 38 primary schools on the island, 9 were rated by Ofsted as requiring improvement, but none rated as inadequate. The remaining 29 primary schools are all rated as good.

**Percentage of secondary schools graded good or outstanding in the most recent inspection**



**Aim:** Increase in the percentage of schools graded good or outstanding in the most recent inspection

**UN Sustainable Development Goal: 4**

**Most Recent Status:**  
March 2023

**Monitoring Measure Only**

**Previous Status:**  
December 2022

**Monitoring Measure Only**

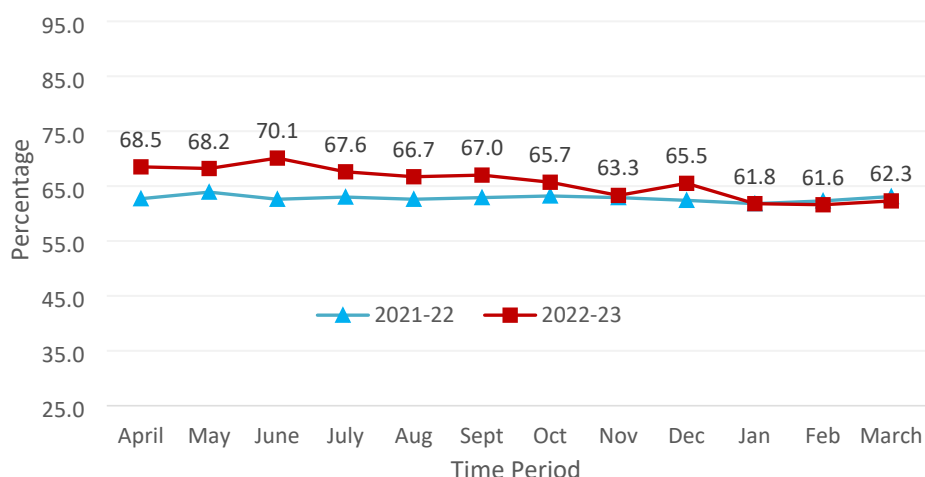
- There have been no new inspections conducted by Ofsted at the six secondary schools on the island since July 2021. As such the percentage of secondary schools rated good or outstanding remained consistent at 50 percent for the last two years.
- Of the six schools, three are rated as ‘requiring improvement,’ and none are rated as ‘inadequate’. The remaining three schools are rated as ‘good’.

**Percentage of all Isle of Wight LA Schools graded good or outstanding in most recent inspection**

Schools	Inadequate	Requires Improvement	Good	Outstanding	Ungraded
48	0	12	36	0	0
	0%	25%	75%	0%	0%
	25%		75%		0%

These results include schools not categorised as either Primary or Secondary. (The Bay CE School, Medina House Schools, St George’s School, and the Pupil Referral Unit all of which are currently rated as being “GOOD” by Ofsted).

### Percentage of care leavers in education, employment, or training (all care leavers aged over 16)



**Aim:** Increase in the percentage of care leavers in education, employment, or training

**UN Sustainable Development Goal:** 4

**Most Recent Status:** March 2023

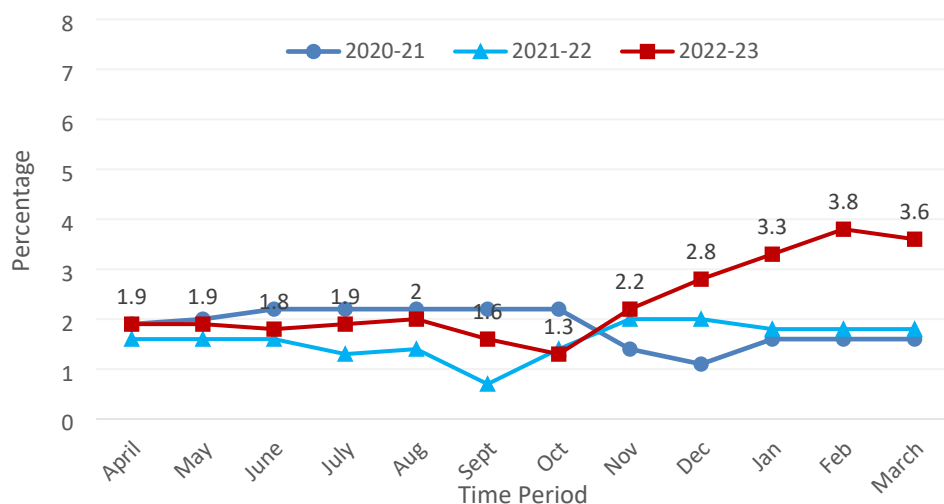
**Monitoring Measure Only**

**Previous Status:** December 2022

**Monitoring Measure Only**

- The percentage has remained stable over quarter 4, and the figure has been consistently above 60 percent since April 2021. As of the end of March the figure is the same as this time last year (62.3).
- The team continues to support young people to access university, providing role models to other young people.

### Number of post 16 not in education, employment, or training



**Aim:** Decrease in the percentage of post 16 not in education, employment, or training

**UN Sustainable Development Goal:** 4

**Most Recent Status:** March 2023

**Monitoring Measure Only**

**Previous Status:** December 2022

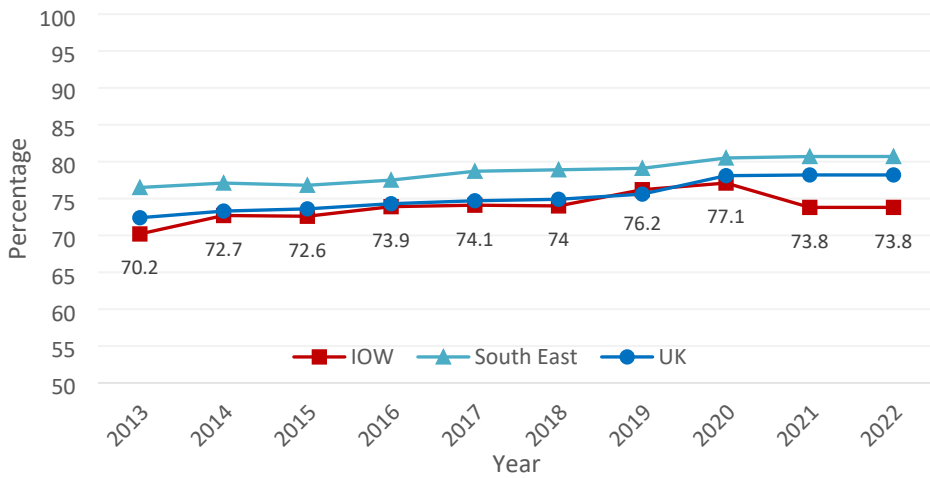
**Monitoring Measure Only**

- Academic year 2022/23 has seen a marked increase nationally in the percentage of young people Not in Employment, Education and/or Training (NEET) and this is mirrored on the Isle of Wight.
- Statutory tracking has improved and the proportion of young people whose destinations are Unknown is lower, remaining static for the last 3 months at 0.5 percent, compared with 0.8 percent for the same period in 2021/22.
- The Department for Education uses a combined measure of young people 16-18 who are either NEET or Unknown and publishes an annual average across the 3-month period December-

February. The combined Isle of Wight percentage for Academic Year 2022/23 is 4.1 percent, an increase from 2.7 percent in 2021/22 though remaining below national and regional averages.

- Island Futures monitor young people’s post 16 destinations (years 12 and 13) and provide careers, education, employment, or training support to young people identified as NEET.

**Proportion of working age population qualified at NVQ level 2 or higher**



**Aim:** Increase in the proportion of the population qualified at NVQ level 2 or higher

**UN Sustainable Development Goal: 4**

**Most Recent Status:** March 2023

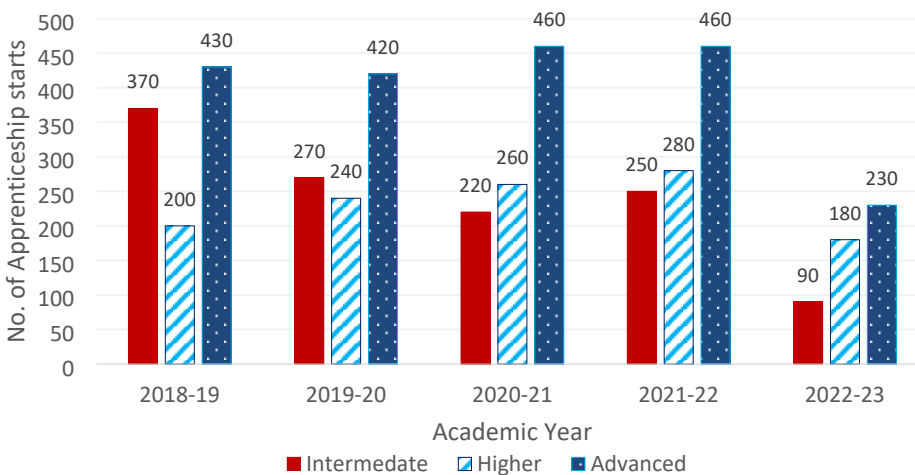
**Monitoring Measure Only**

**Previous Status:** March 2022

**Monitoring Measure Only**

- Annual Nomis data from the Office of National Statistics.
- As at the end of December 2022, approximately 56,500 people on the island were qualified at NVQ level 2 or higher.
- This figure remains the same as at the same period last year (73.8 percent), and down from a high of 77.1 in 2020.
- We are currently 6.9 percent below the South-East average of 80.7, and 4.4 below national average of 78.2.

**Number of apprenticeships starts in the year**



**Aim:** Increase in the average number of apprenticeships starts

**UN Sustainable Development Goal: 4**

**Most Recent Status:** March 2023

**Monitoring Measure Only**

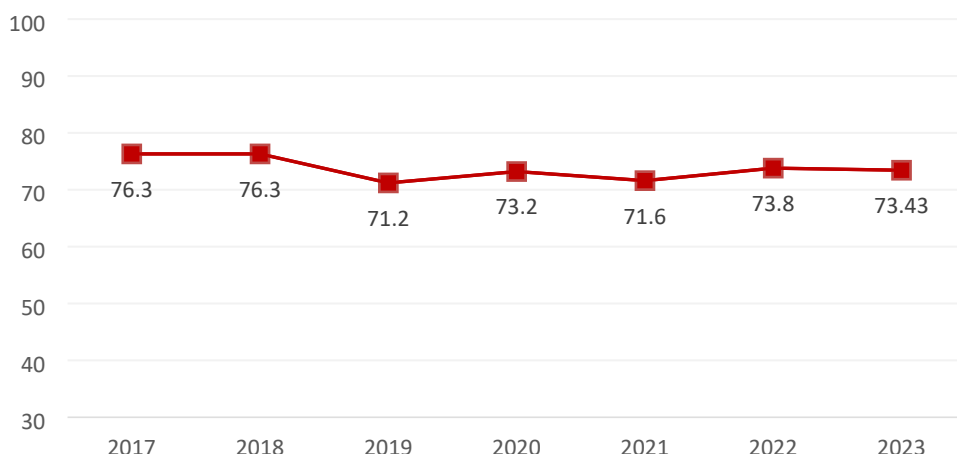
**Previous Status:** March 2022

**Monitoring Measure Only**

- The overall number of apprenticeships starts dropped marginally during Covid, however in the academic year 2021/22 has recovered to pre-pandemic levels with 990 starts compared to 1,000 in 2018/19.
- The proportion of advanced and higher apprenticeships has increased, supporting the growing demand for higher level skills.

- The data for academic year 2022/23 is showing apprenticeship starts to January only (part-year).

### Percentage of population Level 2 qualified at 19 years



**Aim:** Increase in the proportion of the population qualified at level 2 or higher

**UN Sustainable Development Goal:** 4

**Most Recent Status:** March 2023

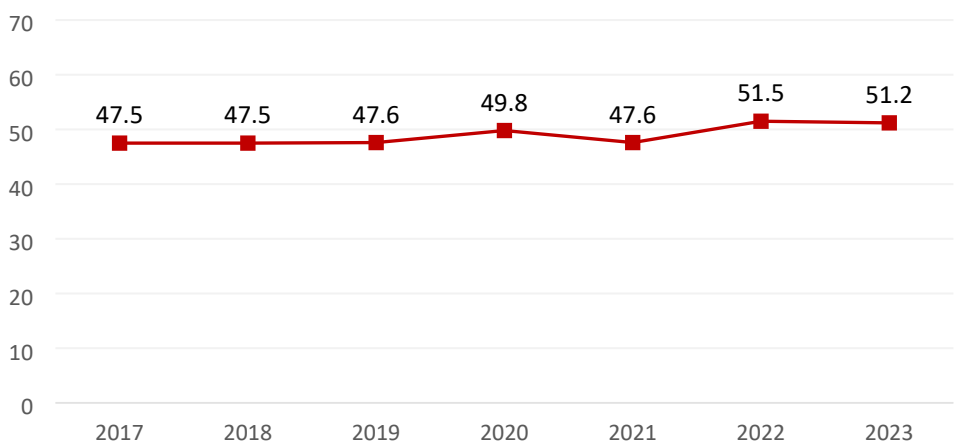
**Monitoring Measure Only**

**Previous Status:** March 2022

**Monitoring Measure Only**

- Annual attainment data from the Department for Education shows there has been a slight decrease in the proportion of those qualified to level 2 at 19 years, from a high of 76.3 percent in 2018 to 73.43 percent this year.
- We have however shown improvement from the low of 71.2 percent in 2019.
- We are currently below the South East average of 80.7 percent, and the UK average of 78.2 percent for the year.

### Percentage of population Level 3 qualified at 19 years



**Aim:** Increase in the proportion of the population qualified at level 3 or higher

**UN Sustainable Development Goal:** 4

**Most Recent Status:** March 2023

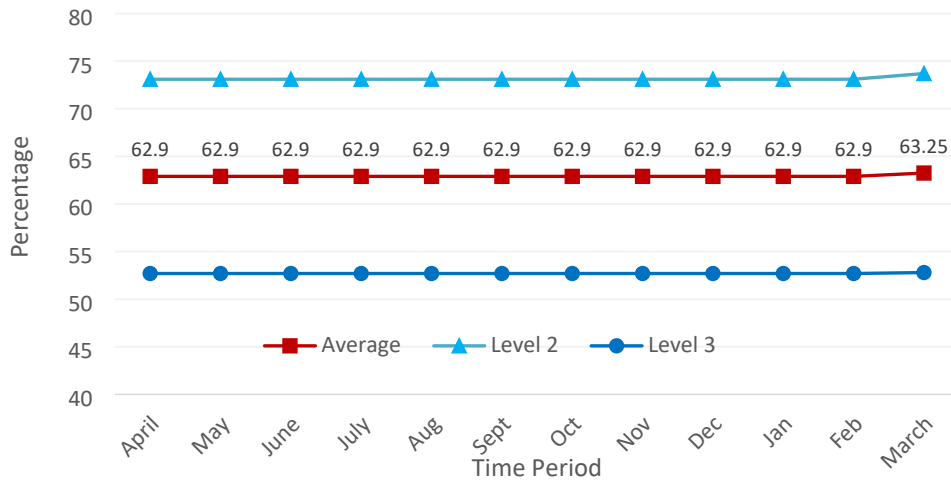
**Monitoring Measure Only**

**Previous Status:** March 2022

**Monitoring Measure Only**

- Annual attainment data from the Department for Education shows there has been an increase in the proportion of those qualified to level 3 at 19 years, from a low of 47.5 percent in 2018 to 51.2 percent this year.
- This compares to a South East average of 60.6 percent, and a national average of 59.3 percent.

### Percentage of Level 2/3 qualified adults (functional skills)



**Aim:** Increase in the proportion of the population qualified at level 2/3 (functional skills)

**UN Sustainable Development Goal:** 4

**Most Recent Status:** March 2023

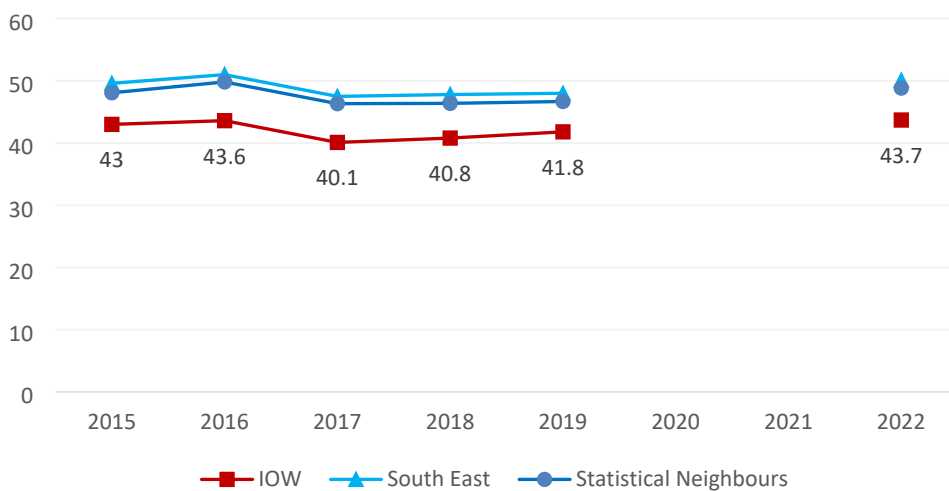
**Monitoring Measure Only**

**Previous Status:** December 2022

**Monitoring Measure Only**

- Nomis data from the Office of National Statistics shows that the percentage of level 2/3 qualified adults (aged 16-64) on the island has remained consistent.
- For NVQ level 2 the total is 73.7 percent, and for NVQ Level 3, 52.8 percent.

### Average Attainment 8 score at Year 11



**Aim:** Increase in average Attainment 8 score per pupil

**UN Sustainable Development Goal:** 4

**Most Recent Status:** March 2023

**Monitoring Measure Only**

**Previous Status:** March 2022

**Monitoring Measure Only**

- This academic year saw the return of the summer exam series after they had been cancelled in 2020 and 2021 due to the pandemic. As part of the transition back to the summer exam series adaptations were made to the exams and the approach to grading for 2022 exams broadly reflected a midpoint between results in 2019 and 2023, when they will be expected to be back in line with the 2019 outcomes.
- Given the unprecedented change in the way GCSE results were awarded in the summers of 2020 and 2021, as well as changes to grade boundaries and methods of assessment for 2021/22, we must exercise caution when considering comparisons over time, as they may not reflect changes in pupil performance alone.



## Service Updates - Key Aspirations and Ongoing Business

### The following activity supports UN Sustainable Development Goal 3:

The February 2023 'Have Your Say Week' provided opportunities for up to 300 children to attend. This year we teamed up with the Isle of Wight Children's Story-telling Festival. Places were provided in the 14 workshops for Ukrainian children, hosted as part of our Home for Ukraine programme, to take part alongside their host's children.

Our young carers spent the day learning about horses and then spent the afternoon riding. Elected Members joined sessions including the 'Come Dine with Us' dinners. In addition, the social event for care leavers who are parents proved popular and will now become a regular group.

The Bright Spots 'Children in Care' survey findings presentation was postponed due to planned building works at County Hall and is being rebooked, however, the Bright Spots 'Your Life Beyond Care' survey of care experienced young people has been completed with the highest ever response rate of 84 percent being achieved.

The feedback from the surveys, participation activities and Have Your Say Weeks are included as actions for improvement in our participation action plan which is reviewed quarterly by the participation team leads. Joint working is planned with the participation leads in Hampshire, to share ideas around participation. The Youth Council and Youth MP continue to meet, also holding road shows in schools to promote membership. The Youth Council have invited the High Sheriff to one of their meetings and are co-opting a young person on the High Sheriff selection group.

'Wight Out', the island LGBTQT+ group attended the Youth Council to promote wider membership and Ryde Town Council also attended a meeting to find out about how to set up and run their own Youth Town Council with co-opted members between the two.

The Isle of Wight has successfully negotiated a Safety Valve deal with the Department for Education (DfE). This deal is worth around £25m including the capital required to build a new special school. There are several workstreams associated with the Safety Valve programme, which was presented to members at the Policy and Scrutiny Committee for Children and Young People. Plans have been shared at an early stage with IW Parent Voice and they will also play an active part of shaping them during implementation. A self-evaluation around SEND (Special Educational Needs or Disability) is being fine-tuned against the new OFSTED Framework for SEND inspection and a multi-agency party including IW Parent Voice has been created to finalise this.

The programme plan for the Family Hub programme has been approved by DfE and budgets are agreed for both the current and next financial years. Partnerships have signed up to their respective areas of the delivery plan and work is on track for the next financial year.

Criteria has been agreed, and is now in use, between the Multi-Agency Safeguarding Hub (MASH) and Probation. A re-referral audit has also been completed and report created that identifies any areas for improvement in social work practice.

The Isle of Wight annual conversation took place in March. This was a positive conversation that looked at safeguarding and child protection, education, and SEND provision (jointly between the LA and Integrated Care Board Health colleagues). It is anticipated that the Isle of Wight will receive a full [ILAC](#)'s (Inspecting Local Authorities Children's Services) inspection during this calendar year.

The Placement Commissioning team continue to source placements as required and placement stability continues to improve for children in care. High-cost placements are carefully monitored due to the provision of care being offered to the most vulnerable children. Plans are progressing to move children back to family-based care or independence when they are ready.

Adopt South are successfully finding adoptive parents for children being placed for adoption. Children are moving to adoptive placements in a timely way and all children have been matched with adopters.

The (Data Analytics and Reporting Excellence) DARE programme and Mosaic implementation continue to progress. User acceptance testing in continuing and go live is expected in October 2023.

**The following activity supports UN Sustainable Development Goal 4:**

The situation at Chillerton Primary School remains unchanged. Children are currently being educated at the Godshill site as there is no longer a teacher at Chillerton and Rookley despite a recruitment campaign.

The Cabinet Member for Children’s Services has asked officers to prepare a comprehensive place planning strategy for schools on the Island for the June Cabinet meeting. This is on the forward plan and is being drafted.

Regular school improvement visits are ongoing, with a report recently submitted to the Policy and Scrutiny Committee for Children’s Services.

As the end of the financial year approaches, school balances will be scrutinised for all maintained schools. Education and Inclusion colleagues will bring a report to Children’s Services Departmental Management Team (CSDMT) so that plans of action are in place for any school ending the financial year in deficit.

Children’s Services has a statutory responsibility called the September Guarantee, to ensure all young people completing compulsory education in Key Stage 4 apply for, and secure, an appropriate place in post-16 education or training, ensuring they receive the careers information, advice, and guidance they need. The proportion of young people on the Island receiving a guaranteed place for academic year 2022-23, already above national average, has improved further with 98.3 percent receiving an offer of a place of learning. The Island ranks highest in the South-East region on this DfE measure.

**The following activity supports UN Sustainable Development Goal 16:**

Meetings continue to take place with Parents Voice, with SEND and with Children’s Social Care representatives to increase engagement with parents.

## Strategic Risks

Failure to improve educational attainment		
Assigned to: Director of Children’s Services		
Inherent score	Target score	Current score
16 RED	6 GREEN	10 AMBER
Previous scores		
Dec 22	Sep 22	Jul 22
10 AMBER	10 AMBER	10 AMBER
Risk score is consistent		

<b>Failure to identify and effectively manage situations where vulnerable children are subject to abuse</b>		
<b>Assigned to: Director of Children's Services</b>		
<b>Inherent score</b>	<b>Target score</b>	<b>Current score</b>
<b>16 RED</b>	<b>5 GREEN</b>	<b>9 AMBER</b>
<b>Previous scores</b>		
<b>Dec 22</b>	<b>Sep 22</b>	<b>Jul 22</b>
<b>7 AMBER</b>	<b>7 AMBER</b>	<b>7 AMBER</b>
<b>Increase in risk score</b>		